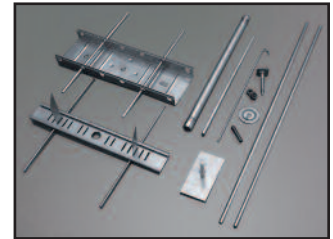




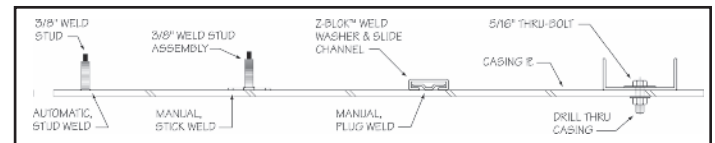
Engineered Systems

Relative to furnace variables such as hot face temperature, velocity, chemical attack, geometry, penetrations and movement, Thorpe engineers will design the Z-BLOK™II module lining to meet the demands of the operation. Some design options include numerous densities, temperatures, module size configurations and anchor attachment. Standard temperature ratings for the Z-BLOK™II Modules include 2300°F and 2600°F, with special designs available up to 3000°F.



Z-BLOK™II patented stainless steel hardware system

Depending on the furnace design, a Z-BLOK™II Module System can use a variety of attachment options to increase the stability of the lining.



Product Integrity

Z-BLOK™II Modules are formed from a continuous length of top quality ceramic fiber blanket, accordion folded and banded to maximize compression in the furnace lining.

Available in large format up to 24" x 24", the large Z-BLOK™II format is recommended for reduced shrinkage, minimal joints, maximized stability and lower overall costs.

Z-BLOK™II Ceramic Fiber Module System features a patented internal hardware design that is installed within 1.25" of the module cold face to increase high temperature stability.

Relative to the customer needs, Thorpe's capabilities range from providing a turnkey, installed package to working with the OEM or end user to design a specific Z-BLOK™II System to meet your schedule.

Thorpe's engineered approach includes detailed installation drawings, thereby facilitating a rapid installation process on jobs ranging from complete rebuilds to quick patch jobs.

Physical Properties	2300	2600
Color	white	white
Typical Density, pcf (kg/m ³)	8, 9.3, 10.7, 12 (128, 149, 171, 192)	8, 9.3, 10.7, 12 (128, 149, 171, 192)
Thickness, in. (mm) (standard)	3.5 (88.9) min.	3.5 (88.9) min.
Maximum temp rating, °F (°C)	2300 (1260)	2600 (1427)
Continuous use limit, up to, °F (°C)	2150 (1177)	2450 (1343)

Chemical Analysis	2300	2600
<i>(% weight basis, after firing)</i>		
Alumina, Al ₂ O ₃	42 - 48	28 - 32
Silica, SiO ₂	52 - 58	52 - 56
Zirconia, ZrO ₂	-	14 - 18
Chromia, Cr ₂ O ₃	-	-
Other	trace	trace

Thermal Conductivity	8.0 pcf	9.3 pcf	10.7 pcf	12.0 pcf
<i>BTU-in./hr-ft²-°F (w/m-k) (ASTM C 177)</i>	<i>(128 kg/m³)</i>	<i>(149 kg/m³)</i>	<i>(171 kg/m³)</i>	<i>(192 kg/m³)</i>
Mean Temperature				
@ 500°F (260°C)	0.46 (0.07)	0.47 (0.07)	0.42 (0.06)	0.42 (0.06)
@ 1000°F (538°C)	1.07 (0.15)	1.02 (0.15)	0.97 (0.14)	0.93 (0.13)
@ 1500°F (816°C)	2.06 (0.29)	1.88 (0.27)	1.76 (0.25)	1.64 (0.23)
@ 2000°F (1093°C)	3.38 (0.48)	3.04 (0.43)	2.78 (0.40)	2.53 (0.36)

The values given herein are typical average values obtained in accordance with accepted test methods and are subject to normal manufacturing variations. They are supplied as a technical service and are subject to change without notice. Therefore, the data contained herein should not be used for specification purposes. Check with your Thorpe office to obtain current information. Z-BLOK™II is a trademark of Thorpe Specialty Services.



CORPORATE HEADQUARTERS

Thorpe Specialty Services Corporation

6833 Kirbyville Street
Houston, TX 77033
Phone: (713) 644-1247
General@ThorpePME.com

OPERATING SUBSIDIARIES

- Thorpe Plant Services, Inc.
- J T Thorpe Company
- Thorpe International Services, Inc.
- Thorpe Engineered Products Company
- Industrial Flooring Services, Inc.
- Clayburn Services Ltd.

INTERNATIONAL

Thorpe International Services, Inc.

6833 Kirbyville Street
Houston, TX 77033
Phone: (713) 644-1247
International@ThorpePME.com

USA OPERATIONS

Manufacturing Locations

Corrosion Resistant Equipment

Arkansas Plant 228 West Industrial Park Rd. Harrison, AR 72601 Phone: (870) 391-4792	Louisiana Plant 3605 Delta Dr. St. Gabriel, LA 70776 Phone: (225) 642-8060	Texas Plant 95 Southbelt Industrial Dr. Houston, TX 77047 Phone: (713) 433-7200
--	--	---

High Temperature Products

Houston-Kirbyville Plant 6833 Kirbyville St. Houston, TX 77033 Phone: (713) 644-1247	Houston-Ranger Plant 4718 Ranger St. Houston, TX 77028 Phone: (713) 671-2458
--	--

Field Service Offices

<p>Alabama</p> <p>Birmingham Office 1273 24th Avenue Hueytown, AL 35023 Phone: (205) 426-4000</p> <p>Arkansas</p> <p>Harrison Office 228 West Industrial Park Road Harrison, AR 72601 Phone: (870) 391-4792</p> <p>Iowa</p> <p>Camanche Office Camanche, IA 52730 Phone: (563) 508-2622</p>	<p>Kentucky</p> <p>Madisonville Office Madisonville, KY 42431 Phone: (270) 635-5421</p> <p>Louisiana</p> <p>St. Gabriel Office 3605 Delta Drive St. Gabriel, LA 70776 Phone: (225) 642-8060</p> <p>Oklahoma</p> <p>Broken Arrow Office 7838 S. Elm Place Broken Arrow, OK 74011 Phone: (918) 455-8928</p>	<p>Texas</p> <p>Beaumont Office 6001 Highland Avenue Beaumont, TX 77705 Phone: (409) 838-9121</p> <p>Corpus Christi Office 4602 Southview Drive Corpus Christi, TX 78408 Phone: (361) 500-2001</p> <p>Dallas Office – Industrial Flooring Services, Inc. 2736 Market Street Garland, TX 75041 Phone: (214) 349-7891</p>	<p>Houston-Kirbyville Office 6833 Kirbyville Street Houston, TX 77033 Phone: (713) 644-1247</p> <p>Houston-Ranger St. Office 4718 Ranger Street Houston, TX 77028 Phone: (713) 671-2458</p> <p>Houston-Southbelt Office 95 Southbelt Industrial Drive Houston, TX 77047 Phone: (713) 433-7200</p>
---	---	---	--

CANADA OPERATIONS

Clayburn Services Ltd.

<p>Alberta</p> <p>Edmonton Office (Headquarters) 16010-118th Avenue Edmonton, AB T5V 1C6 Phone: (780) 468-4100</p> <p>Calgary Office #108 4140 – 6th Street NE Calgary, AB T2E 8C8 Phone: (403) 276-4421</p>	<p>Fort McMurray Office 306-8535 Gordon Avenue Fort McMurray, AB T9H 0B7 Phone: (780) 468-4100</p>	<p>British Columbia</p> <p>Abbotsford Office 31543 King Road Abbotsford, BC V2T 5Z2 Phone: 1 (800) 859-4885</p> <p>Prince George Office 8603 North Kelly Road Prince George, BC V2K 2W7 Phone: (250) 962-2322</p>	<p>Vancouver Island Office 1099 Popham Road Parksville, BC V9P 2T3 Phone: (250) 248-5353</p>
---	---	--	---